



T.C. Saęlık Bakanlıęı

Family Medicine in Turkey and Manisa

Dr.Gonca ATASOYLU, M.D., PhD
Manisa Directorate of Public Health, 04.2013

Plan

- Family Medicine: a component of Health Transformation Program
- Family Medicine in Manisa
- Some health indicators
- Highlights of Manisa Directorate of Public Health

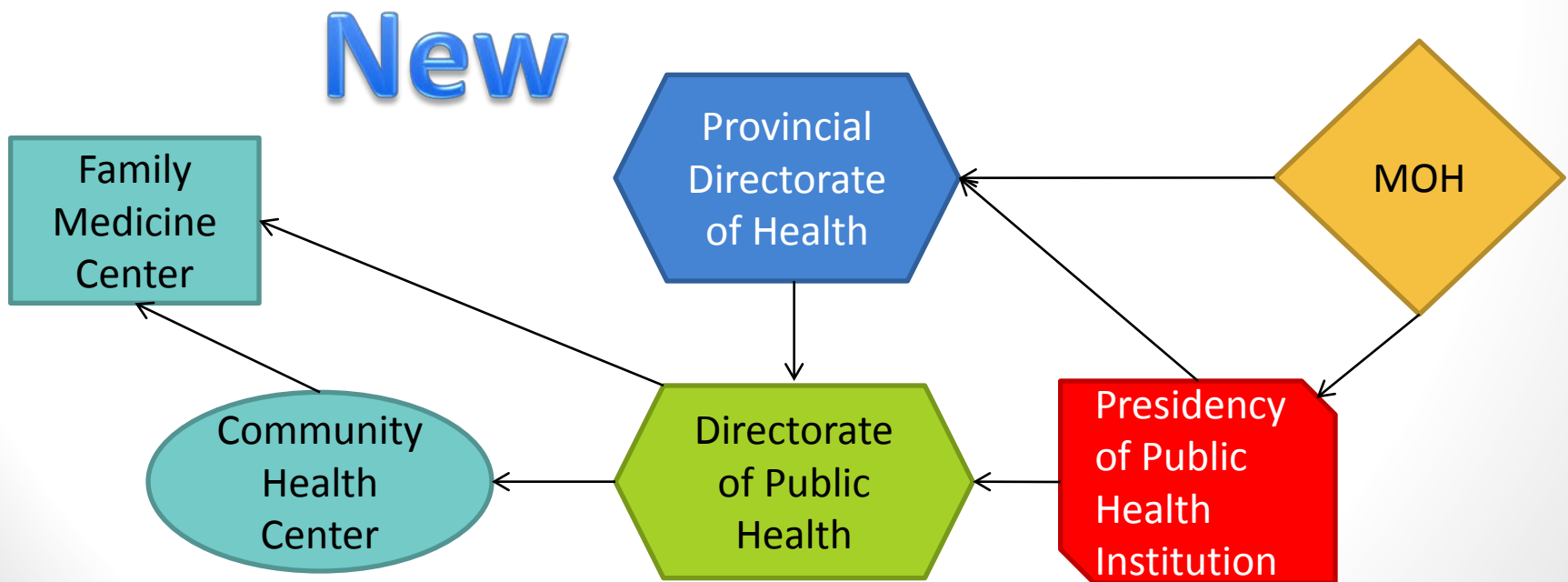
Health Transformation Program (HTP)

- Began in 2003
- Past health accumulations and experience
- Recent health reform efforts
- Successful examples from all over the world
- Consideration of turkey's conditions

Main goals of the HTP

- Provision and
- Financing of
- **Effective, equitable, accessible and high-quality** health care services

Old and New Structure



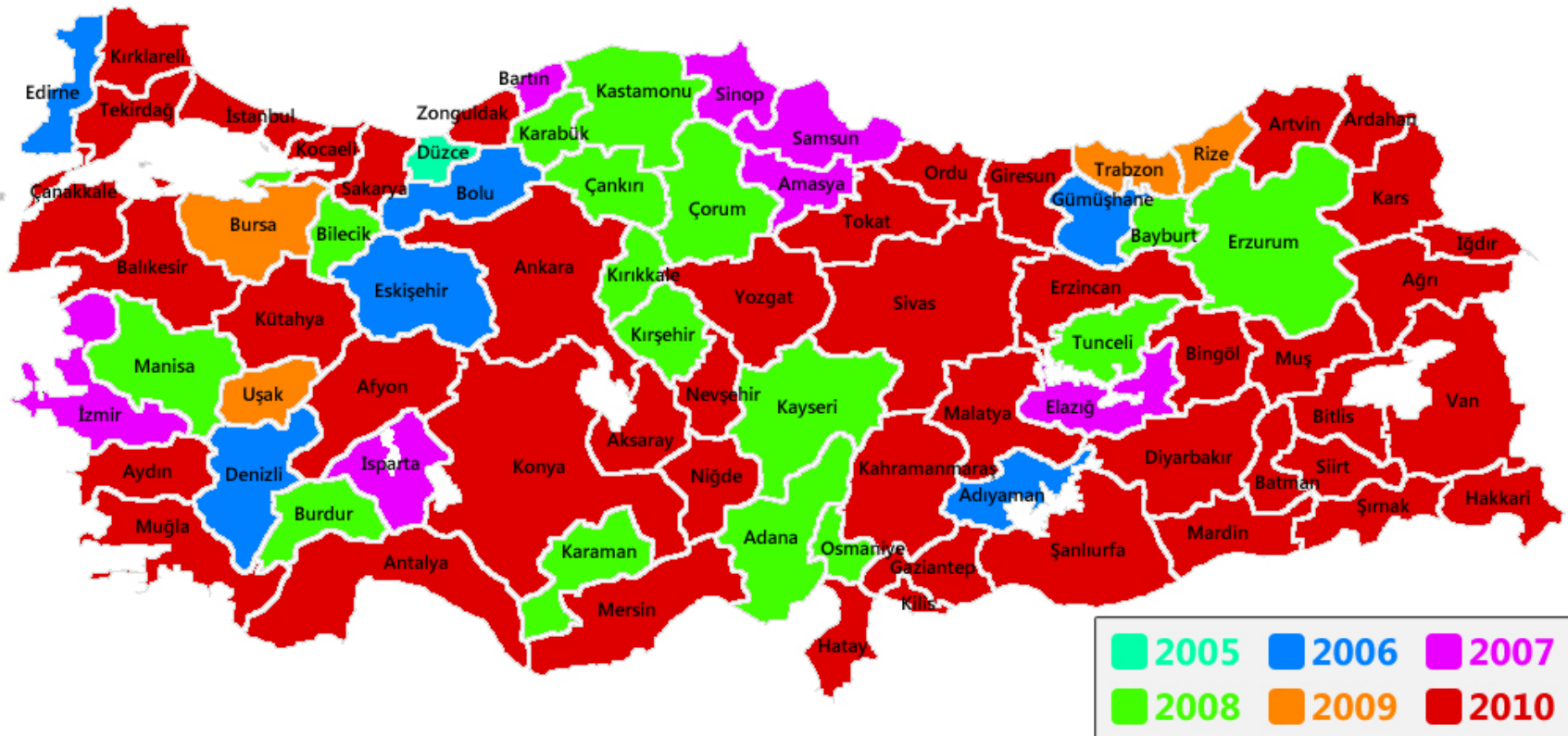
Family Medicine

- Most important part of strengthening primary health care
- Examples from other countries
- Achieving aforementioned goals
- Turkey Family Practice Model
- 2004 Major regulations

Family Medicine

- 2005 pilot implementation: province of Düzce
- 2006: (+6) 7 provinces
- 2007: (+7) 14 provinces
- 2008: (+17) 31 provinces
- 2009: (+4) 35 provinces
- 2010: (+46) 81 provinces: all of Turkey, transition completed

Transition Over the Years



Main Aims of Family Medicine

- Improvement of primary health care services
- Emphasis on preventive health care based on individual needs
- Personal health records
- Equal access to health services

Family Physician

- Physician or specialist
- Full-time contract basis
- Continuously and comprehensive
- Preventive health care and diagnostic, curative and rehabilitative health services
- Every person without discrimination
- Provides essential mobile health services

Current Situation

Family Physicians	20.503
Family Medicine Centers	6.524
Community Health Centers	957
Village Clinics	5.864
Registered users	73.199.542
Average per physician	3.570

Mobile Health Services

- On location
- For people with difficulty in accessing the services (distance, etc.)
- 13% of total population
 - vaccinations,
 - infant and pregnant women follow-ups
 - Care at home
- Mobile drug stores (4% of the total population)

Fundamentals of Payment

- Point calculation based on registered people
- Different coefficients for different service needs
 - Pregnant: 3.0
 - Age 65+: 1.6
 - Age 0-5: 1.6
 - «Regular»: 0.79
- Different coefficients for location needs

Negative Incentives

- To improve preventive health care
- Vaccinations, infant or pregnant women follow-up ratio
- At or below 98% -> deduction from payment
- Up to 20% in total

Payments for Costs

- Service locations running at an acceptable level (utility and other costs)
- Higher payment for additional physical space, facilities, equipment or personnel
- Responsible for managing medical supply costs
- Additional payment for mobile health services

Information System

- Advanced IT structure from the beginning
- «**Family Medicine Information System**»
- Demographical and health information
- All physicians
- Central Database
- Reports for stakeholders
- Statistics, planning, payments

Responsibilities & Duties of FP's

- health of all members of the family
- all health related issues of the applicant
- preventive health services
- promotion and improvement of health
- counseling services
- keep and update health records

Examples of services

PREVENTIVE SERVICES

- Vaccination
- Follow-ups of infants, pregnant women, women of fertility age
- Screening programs
- Vit D and iron supplementation
- Periodic check-ups on certain ages
- National disease control programs

PROMOTION OF HEALTH

- Obesity
- Tobacco use

Comparison with the Past

- Negative incentive --> responsibility for the preventive health care
 - routine vaccination ratio 78(2002) --> 97 (2010)
- Improved relationships with the patients --> increased preference for primary care
 - Primary care examination ratio 37% --> 49%
- Improved physical conditions
 - e.g. One exam. room per physician

Comparison with the Past (2)

- Improved wages --> increased motivation
- Infant Mortality Rate 28.5 (2003) --> 10.1 (2010)
- Maternal Mortality Ratio 61 (2003) --> 16.4 (2010)
- EUROPEP (primary care): Patient satisfaction 89% (2011)

Evaluation and Future

- Assigned people per physician: 3570
- Aim: 2000 people per physician in 2023
 - Accelerated family medicine training (On-line)
 - New regulations
- Positive incentives:
 - chronic diseases
 - promotion and improvement of health
 - prevention and palliative treatment of cancer

Evaluation and Future (2)

- Family Medicine Administration was restructured
- Aim to improve:
 - Education
 - Monitoring and assessment
 - Community health services
- Work is ongoing for improvement in:
 - Technological infrastructure (software&hardware)
 - Standardization
 - Presentaion of health services in general

Family Medicine in Manisa



Family Medicine in Manisa

Feature	2008	2013
Family physicians (FP's)	378	398
Average population per FP	3.500	3.418
Family medicine centres	156	161
Community health centres	18	16
Mobile health services	767 villages for 198 FP's	756 villages for 201 FP's
On-location sites*		22
FP's in geographically –challenged areas**		17
Integrated health centres**	2	3

*Prison, reformatory, children's home, etc

** Defined by legislation after 2008, payment coefficients differ.

Area	FP's		FMC's	
	n	%	n	%
City center	86	21,6	20	12,4
District center	203	51,0	59	36,6
Municipality	78	19,6	52	32,3
Village	31	7,8	30	18,6
TOTAL	398	100,0	161	100,0



DISTRICT	FP's		FMC's	
	n	%	n	%
Merkez	98	24,6	29	18,0
Ahmetli	7	1,8	2	1,2
Akhisar	49	12,3	22	13,7
Alaşehir	29	7,3	12	7,5
Demirci	15	3,8	9	5,6
Gölmarmara	7	1,8	1	0,6
Gördes	10	2,5	5	3,1
Kırkağaç	12	3,0	6	3,7
Köprübaşı	4	1,0	1	0,6
Kula	14	3,5	6	3,7
Salihli	45	11,3	18	11,2
Sarıgöl	11	2,8	7	4,3
Saruhanlı	17	4,3	11	6,8
Selendi	7	1,8	4	2,5
Soma	30	7,5	10	6,2
Turgutlu	43	10,8	18	11,2
TOTAL	398	100,0	161	100,0



Some health indicators

Health indicator	Turkey , 2010*	Manisa, 2010**	Manisa, 2012***
Crude Birth Rate (%0)	17.5	13.7	14.4
Crude Death Rate(%0)	6.3	5.9	
Fertility Rate (%0)	76	52	
Infant Mortality Rate (%0)	10.1	10.5	7.7
Neonatal MR	8.5	7.2	4.7
Postneonatal MR	1.6	3.3	3.0
Maternal Mortality Ratio (100.000)	16.4	28.1	10.6
Average pop/physician (MoH)	1018	1131	
Average pop/physician (Total)	708	708	

*Ministry of Health of Turkey, Health Statistics Yearbook 2010

**Manisa Directorate of Health, Health Statistics Yearbook 2010

*** Directorate's statistics

Some health indicators (2)

Service	Turkey , 2010	Manisa, 2010	Manisa, 2012
Average pregnancy follow-up	4.2	5.6	4.5
Average infant follow-up	7.1	7.7	8.2
Average 1-4 year follow-up	1.6	1.0	
Vaccine coverage-MMR (%)	97	97	98.5
Birth in hospital (%)	92	99.5	

*Ministry of Health of Turkey, Health Statistics Yearbook 2010

**Manisa Directorate of Health, Health Statistics Yearbook 2010

*** Directorate's statistics

Highlights of Manisa (DoPH)

- **Qualified IT services:**
 - Developed its own program, served freely to FP's
 - Coverage 100%
 - Monitoring on provincial level
- **Innovative:**
 - Vaccine coverage: age-appropriate vaccination
 - On-line monitoring of vaccine reffridgerators
 - Child growth monitoring
 - Occupational health and safety
- **Welcomes intersectoral collaboration:**
 - Universities: Research, education..... Symposium this week

Highlights of Manisa (DoPH) (2)

- **Experienced administrators:**
 - Field service, worked in Ministry of Health, postgraduate education.
- **Management mentality:**
 - Welcomes participation and is tolerant
- **Places emphasis on visibility:**
 - Local and national media
 - Attends scientific meetings: posters, declarations
- **Leading city in patient satisfaction:**
 - 3rd in the country



Thank you